

A man with a beard and short dark hair, wearing a white t-shirt with the Levi's logo, is looking down at something in his hands. He is in a clothing store, with shelves of folded clothes and hanging garments in the background. Another person's arm and shoulder are visible on the right side of the frame, suggesting a customer or another employee. The lighting is warm and focused on the man in the foreground.

LEVI STRAUSS & CO.

DIVERSITY AND INCLUSION REPORT

At Levi Strauss & Co., we are committed to creating a workplace where vibrant and respectful discourse thrives. That means cultivating an inclusive environment where everyone feels safe, valued and has a sense of belonging – and knows unequivocally that their contributions are welcome and wanted.

The reality is we need to do more. We pride ourselves on being a progressive company that takes bold stances to promote equity, justice and inclusivity all around the world, but we must ensure that we live these same principles within our organization to be our very best.

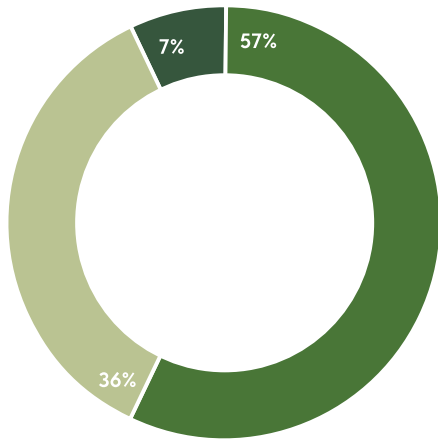
As an initial step, we are publishing our demographic representation data, with a commitment to update our numbers on an annual basis. We must start by being transparent on where we stand now and the progress we're making. (We currently have global data for gender and U.S. data for ethnicity, mainly due to legal restrictions and different cultural norms in other parts of the world, but we are looking at how we can take a broader view of diversity and inclusion globally.)

We know that businesses are stronger and more successful when they are diverse. We are committed to building an organization that better reflects the communities we work in and serve.

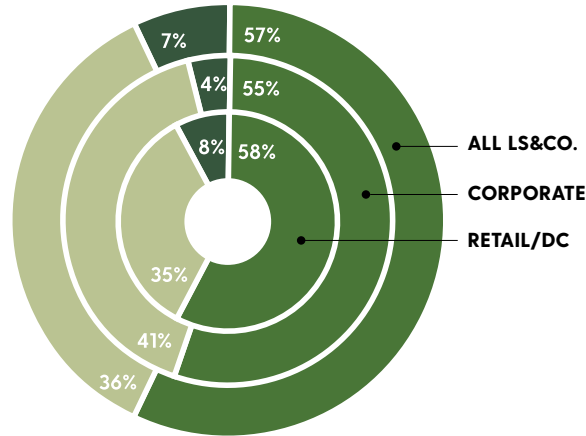
LS&Co. Global Workforce Population by Gender

MALE FEMALE NO DATA

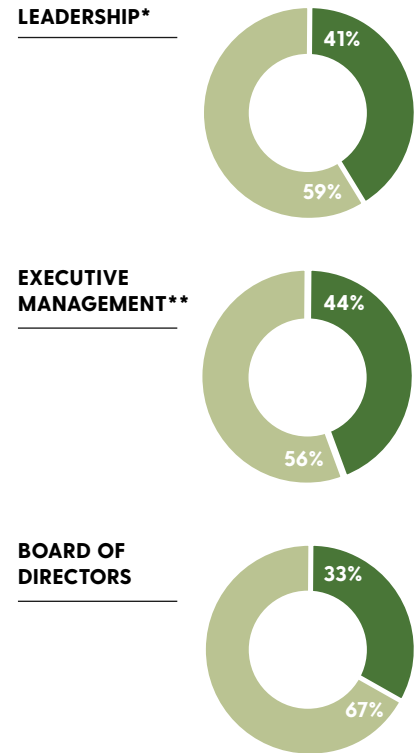
LS&Co. Global Workforce Population by Gender



LS&Co. Global Workforce Population by Gender/Location Type



LS&Co. Global Top Management Population by Gender



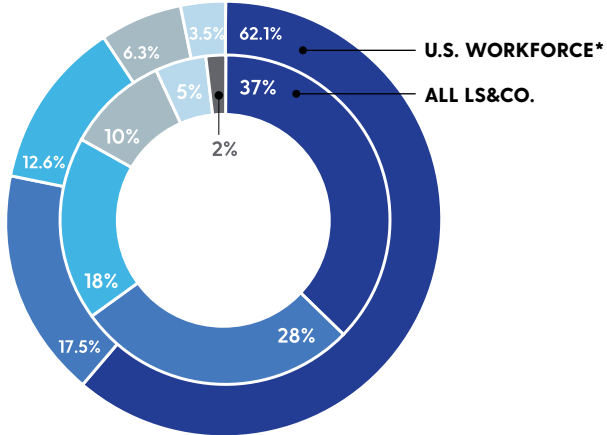
* Leadership is defined as the top ~250 leaders in the company.

** Executive Management is defined as the [Global Leadership Team](#). (Updated 6/17/20)

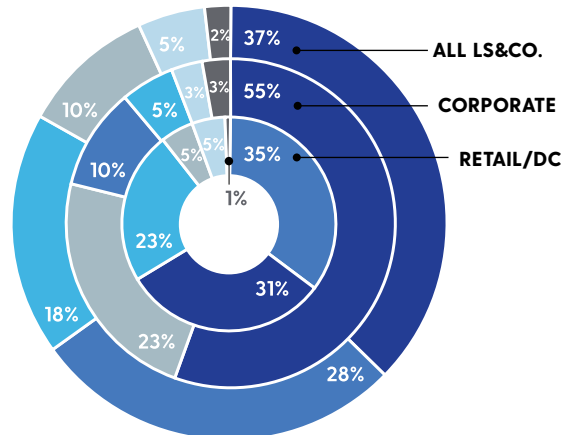
LS&Co. U.S. Workforce Population by Race/Ethnicity



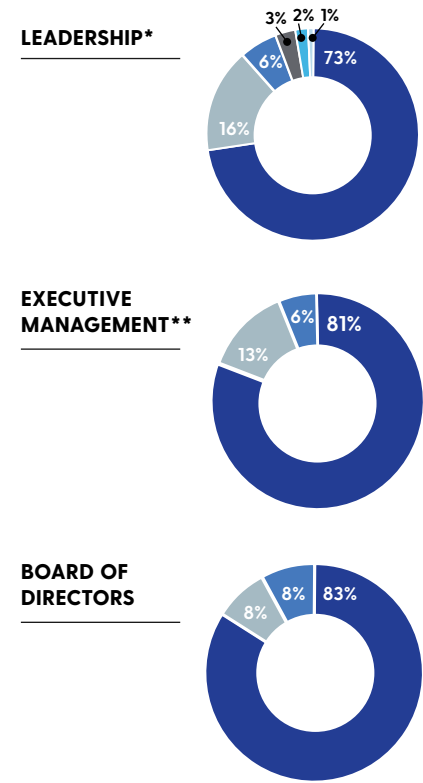
U.S. Workforce Population vs. LS&Co. U.S. Workforce Population by Race/Ethnicity



LS&Co. U.S. Workforce Population by Race/Ethnicity/Location Type



LS&Co. Global Top Management Population by Race/Ethnicity



* 2018 data from U.S. Bureau of Labor Statistics
Figures may not total 100 percent due to rounding.

* Leadership is defined as the top ~250 leaders in the company.

** Executive Management is defined as the [Global Leadership Team](#). (Updated 6/17/20)